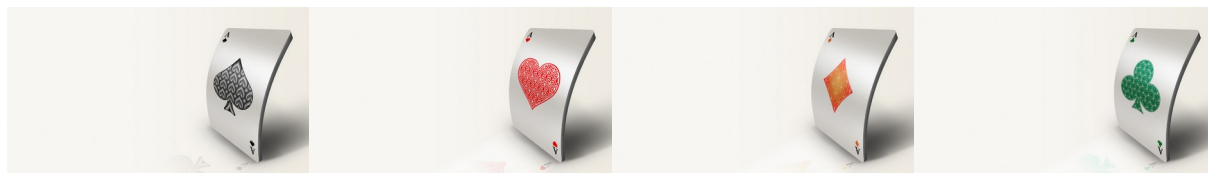


OPL Summer Season



January 20th to March 17th, 2025

Online Pairs LEAGUE

One 12-board Match per week

Divisions of 8 NS pairs playing a Round Robin against 8 EW pairs

Monday evenings at 7:30pm – done well before 9pm!

Substitute up to three times if you can't make a match

Half-price for players under 100 masterpoints

\$10 refund for players between 100 & 300 masterpoints

Early-bird discount: register by Tuesday Dec 31st

Director: Alan Bustany

B4s RED masterpoints for every win or draw

Entry fee: \$50 per player

Register via MyABF by Friday Oct 4th



Organiser: Alan Bustany

Phone: 0411 264 305

Email: Alan.Bustany@gmail.com

Let's listen in to a (hypothetical) conversation between some players...

Alice: Hi Bob, want to play some Bridge on Monday evening?

Bob: Maybe, Alice, but it would make me a bit tired for work on Tuesday.

A: This won't. It's only half a session and it'll all be over by 9pm. If you want, after the match we can chat and review our play over a glass of cocoa — that'll help you sleep for work the next day!

B: Oh, OK, where do I have to go?

A: Nowhere! Just stay at home, finish dinner, and meet me online before 7:30pm.

B: Online? I am useless with technology. And doesn't that mean we'll be beaten up by all those good players?

A: RealBridge is really simple. You can use Google, Bob, so you can use RealBridge. And they have a free trial where we can check out our video and microphones, ask any questions, and play a couple of boards.

A: And they are creating divisions in which we play people of our own ability from across the country. Those city slickers will probably be in a higher division than us! They even give a discount for us less-experienced players.

B: So how does the half-session work?

A: As I understand it, it's a bit like a football league. We play one 12-board match each week for a "season" of eight weeks. Depending on how we do we might be promoted or relegated so that we are playing pairs of similar ability next "season".

B: OK, and only \$25 each for the whole season for Novices like us! Where do I sign up?

A: On **MyABF** of course! The Summer season starts Monday Jan 20th thru to Saint Patrick's Day (Monday March 17th). It skips the week (Mon Feb 3rd) when many people are in the Gold Coast.

B: Great! I'll put our names down on **MyABF**. Thanks for the invite, Alice.