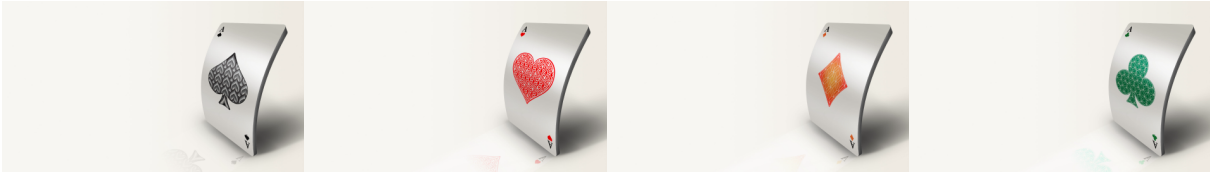


# OPL Winter Season



July 23<sup>rd</sup> to September 10<sup>th</sup>, 2024

## Online Pairs LEAGUE

### One 12-board Match per week

Divisions of 8 NS pairs playing a Round Robin against 8 EW pairs

**Tuesday** evenings at 7:30pm – done well before 9pm!

Substitute up to three times if you can't make a match

**Half-price for players under 100 masterpoints**

**Early-bird discount: register by end of June**

**Director: Alan Bustany**

**B4s RED masterpoints for every win or draw**

**Entry fee: \$50 per player**

**Register via MyABF by Friday July 19<sup>th</sup>**



**Organiser: Alan Bustany**

**Phone: 0411 264 305**

**Email: [Alan.Bustany@gmail.com](mailto:Alan.Bustany@gmail.com)**

*Let's listen in to a (hypothetical) conversation between some players...*

**Alice:** Hi Bob, want to play some Bridge on Tuesday evening?

**Bob:** Maybe, Alice, but it would make me a bit tired for work on Wednesday.

**A:** This won't. It's only half a session and it'll all be over by 9pm. If you want, after the match we can chat and review our play over a glass of cocoa — that'll help you sleep for work the next day!

**B:** Oh, OK, where do I have to go?

**A:** Nowhere! Just stay at home, finish dinner, and meet me online before 7:30pm.

**B:** Online? I am useless with technology. And doesn't that mean we'll be beaten up by all those good players?

**A:** RealBridge is really simple. You can use Google, Bob, so you can use RealBridge. And they have a free Q&A session where we can check out our video and microphones, ask any questions, and play a couple of boards.

**A:** And they are creating divisions in which we play people of our own ability from across the country. Those city slickers will probably be in a higher division than us! They even made it half-price for us less-experienced players.

**B:** So how does the half-session work?

**A:** As I understand it, it's a bit like a football league. We play one 12-board match each week for a "season" of eight weeks. Depending on how we do we might be promoted or relegated so that we are playing pairs of similar ability next "season".

**B:** OK, and only \$25 each for the whole season for Novices like us! Where do I sign up?

**A:** On **MyABF** of course! The Winter season starts Tuesday July 23<sup>rd</sup> (after the ANC in Orange), thru to the second Tuesday in September. I can also arrange substitutes during the Coffs Gold Congress if you like.

**B:** Great! I'll put our names down on **MyABF**. Thanks for the invite, Alice.