

## ACCOMMODATION

Many hotels are offering special rates to ANC 2021 participants. From the *Double Tree by Hilton Perth Waterfront* situated in the heart of Elizabeth Quay, to the historic *Melbourne Hotel* and the *Adina Apartments* close to the Perth Convention and Exhibition Centre (PCEC), there is a range of accommodation types to suit everyone. However, be aware that from time to time these hotels offer special deals, so we suggest you also check these out. Information on participating hotels and the special links or codes for ANC 2021 are provided below. Distances to the PCEC are noted. Please see the Transport section for free and frequent transport to and from the hotels and the PCEC.

### The Melbourne Hotel

700m from the PCEC

33 Milligan St, Perth

08 9320 333

From the corner of Hay and Milligan Street in the heart of Perth city, The Melbourne Hotel has been part of the local character and culture since 1897. Fusing old-world elegance with modern, state-of-the-art amenities, a stay at The Melbourne Hotel promises a fascinating glimpse into Perth's dynamic heritage. Opt for the aptly named Heritage Rooms, each a one-of-a-kind space with distinct, original design elements, or experience a contemporary room with sophisticated and modern architecture

Just as every room has a story to tell, so do the five dining offerings. Savour an international array of flavours, from classic Australian favourites to authentic Asian cuisine. Relax in the 'Old Melbourne' pub-styled warmth of De Baun & Co, pick up a decadent Japanese cream bun from Hattendo, sample sophisticated chef-driven Japanese and Cantonese specialities at Keisuke and Grand Orient, or watch the city skyline sparkle to life with a cocktail at Aurora Rooftop Bar. See information sheet

<https://reservations.travelclick.com/103867?RatePlanId=5251270>



## Rendezvous Perth

600 m from the PCEC

24 Mount St, Perth

Ph: 08 9481 0866

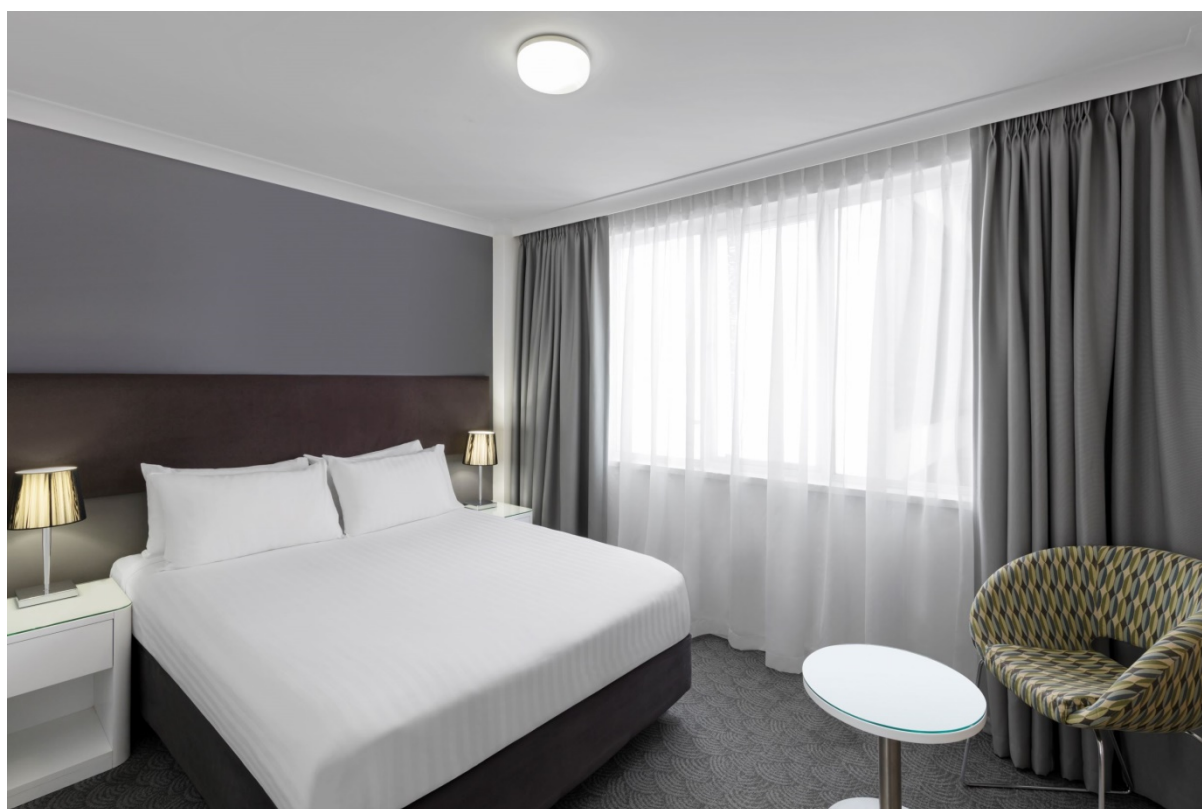
Rendezvous Hotel Perth Central is conveniently located in the heart of Perth's central business district. Within easy walking distance of Perth Convention and Exhibition Centre and just around the corner from St Georges Terrace, and the greenery of Kings Park and Botanic Garden. Whether you are hosting a business conference or intimate private function, make it happen, hassle free at Rendezvous Hotel Perth Central. With 5 spacious rooms catering for boardroom meetings of 5, up to large events of up to 180, let our conference team and purpose built facilities wow your guests. Choose one of our 103 stylish rooms and apartments to enjoy smart accommodation that has been designed with your needs in mind.

Link

[https://reservations.tfehotels.com/?adult=1&arrive=2021-11-06&chain=14687&child=0&configcode=CORP\\_SBE&currency=AUD&depart=2021-11-07&hotel=62271&level=hotel&locale=en-US&promo=ANC21&rooms=1&themecode=TFE\\_RENSBE](https://reservations.tfehotels.com/?adult=1&arrive=2021-11-06&chain=14687&child=0&configcode=CORP_SBE&currency=AUD&depart=2021-11-07&hotel=62271&level=hotel&locale=en-US&promo=ANC21&rooms=1&themecode=TFE_RENSBE)

### Important information about the online link:

- The discounted rates will apply from the 6<sup>th</sup> to 18<sup>rd</sup> November 2021, subject to availability. If we are no longer able to offer the discounted rate, the online link will close
- From time to time specials are run with strict terms and conditions such as fully pre-paid and non-refundable. Those specials have a limited inventory and will be available for delegates to book, if they are happy with those terms and conditions.



## Adina Apartment Hotel

100 m from the PCEC

33 Mounts Bay Rd, Perth

Ph: 08 9217 8000

Situated seconds from the Perth Convention and Exhibition Centre, Adina Apartment Hotel Perth is conveniently nestled in the CBD and close to the magnificent Kings Park. The hotel is easily accessible with plenty of parking nearby and within walking distance of the Esplanade Train Station, making it a perfect base for convention delegates. The private, apartment-style accommodation is a home away from home for guests, offering enough room to entertain or simply relax in a spectacular destination.

Link:

[https://reservations.tfhotels.com/?adult=1&arrive=2021-11-06&chain=14687&child=0&configcode=CORP\\_SBE&currency=AUD&depart=2021-11-07&hotel=58462&level=hotel&locale=en-US&promo=ANC21&rooms=1&themecode=TFE\\_ADISBE](https://reservations.tfhotels.com/?adult=1&arrive=2021-11-06&chain=14687&child=0&configcode=CORP_SBE&currency=AUD&depart=2021-11-07&hotel=58462&level=hotel&locale=en-US&promo=ANC21&rooms=1&themecode=TFE_ADISBE)

### Important information about the online link:

- The discounted rates will apply from the 6<sup>th</sup> to 18<sup>rd</sup> November 2021, subject to availability. If we are no longer able to offer the discounted rate, the online link will close
- From time to time specials are run with strict terms and conditions such as fully pre-paid and non-refundable. Those specials have a limited inventory and will be available for delegates to book, if they are happy with those terms and conditions.



## Parmelia Hilton Perth

250m from PCEC

14 Mill St

08 9215 2000

A connected stay in central Perth. We're next door to the Perth Convention and Exhibition Centre, and in walking distance of Brookfield Place and Kings Park and Botanic Garden. Elizabeth Quay on the Swan River, Perth Arena, and His Majesty's Theatre are less than 10 minutes away on foot. Perth Zoo is within five kilometers. Enjoy our outdoor pool and all-day dining at our restaurant.

Full buffet breakfast for \$15.00

Link:

<https://www.hilton.com/en/book/reservation/deeplink/?ctyhocn=PERHITW&groupCode=GANCA&arrivaldate=2021-11-04&departuredate=2021-11-20&cid=OM,WW,HILTONLINK,EN,DirectLink&fromId=HILTONLINKDIRECT>



## DoubleTree by Hilton Perth Waterfront

1 km from the PCEC

1 Barrack Square

Ph: 08 6372 1000

Set on the Swan River waterfront, our hotel is next to Elizabeth Quay entertainment and the iconic Bell Tower and short walk to the Perth Convention and Exhibition Centre. Quayside paths are on our doorstep, and we're 10 minutes from downtown Perth and Kings Park and Botanic Garden. Take in views from the rooftop pool and bar, and enjoy our 24-hour fitness centre and a warm DoubleTree cookie on arrival.

Full buffet breakfast \$20.00

Link: <https://www.hilton.com/en/book/reservation/deeplink/?ctyhocn=PERBSDI&groupCode=GBA-WB&arrivaldate=2021-11-04&departuredate=2021-11-20&cid=OM,WW,HILTONLINK,EN,DirectLink&fromId=HILTONLINKDIRECT>



## Nesuto Mounts Bay

0.5 km from the PCEC  
112 Mounts Bay Rd  
Ph: 08 9213 5333

A stay at Nesuto Mounts Bay places you in the heart of Perth, within a 5-minute walk of Jacobs Ladder and Perth Convention and Exhibition Centre (PCEC). This 4-star aparthotel is 0.5 mi (0.8 km) from Central Park Tower and 0.5 mi (0.9 km) from His Majesty's Theatre.

Make yourself at home in one of the 139 air-conditioned rooms featuring kitchens with refrigerators and stovetops. Rooms have private balconies. Cable programming and DVD players are provided for your entertainment, while complimentary wireless Internet access keeps you connected. Conveniences include phones, as well as safes and desks. Be sure to enjoy recreational amenities, including an outdoor pool, an outdoor tennis court, and a fitness center. Additional amenities at this aparthotel include complimentary wireless Internet access, tour/ticket assistance, and a vending machine.

Enjoy a satisfying meal at Courtside Restaurant serving guests of Nesuto Mounts Bay . Buffet breakfasts are available daily from 6:30 AM to 10:00 AM for a fee.

<https://reservations.travelclick.com/10787?groupID=3201591>



## **Crowne Plaza**

2.2 km from PCEC

54 Terrace Rd, East Perth

Ph: 08 9270 4200

Crowne Plaza Perth is a refreshingly personal hotel conveniently located to everything Perth has to offer both business and leisure guests. Many of the spacious guestrooms offer impressive views of picturesque Langley Park and the Swan River. Easy reach of the city and its many attractions make this Perth hotel the ideal place to stay for leisure and business travel. The natural surrounds are ideal for relaxing and recreation, while onsite parking and free public transport make it simple and convenient to get around town.

Guests at Crowne Plaza Perth enjoy all the facilities and service you would expect from a premium city hotel plus more. The hotel's gym, pool, recreation facilities, 24hr business centre and professional team ensure guests remain relaxed, productive and energised throughout their stay. Enjoy a healthy meal from in-room dining menu, relax at the hotel's lobby bar or dine alfresco under the palms at Gusti Restaurant. Sample some of Western Australia's best local produce and distinctive Margaret River wine.

### **Crowne are offering ANC participants the following rates:**

Standard Twin Double Room - \$163 per night

Superior Queen River View Room - \$193 per night.

If you have any issues contact Liz Harrision at [cpp.reservations@ihg.com](mailto:cpp.reservations@ihg.com)

<https://www.crowneplaza.com/redirect?path=hd&brandCode=CP&localeCode=en&regionCode=925&hotelCode=PURTR&PMID=99801505&GPC=BA3&cn=no&viewfullsite=true>



## Citadines St Georges Tce

450 m from the PCEC  
185 St Georges Terrace, Perth  
08 9226 3355

Positioned in the heart of Perth's CBD, Citadines St Georges Terrace is perfectly located for delegates attending the Australian National Championships at the Perth Convention and Exhibition Centre, as the centre is only a short 5-minute (450 metre) walk away. Citadines offers a selection of spacious studio apartments with fully-equipped kitchenettes, large working desk and modern amenities. The properties contemporary features include a 24-hour reception, alfresco restaurant and bar, access to an offsite gym, business corner and complimentary Wi-Fi. Guests will also enjoy being a stone's throw from the cities' best restaurants, bars and nightlife, scenic Swan River and Elizabeth Quay.

### Making a booking is simple!

1. Visit CITADINES.com
2. Select 'Citadines St Georges Terrace Perth' from the Destination List
3. Enter your reservation details, **Click on Do you have a code?** Select Corporate and enter your code: **P5PCE804** to receive a **15% discount** off our Best Flexible rates with very flexible 24-hour cancellation policy!
4. You will receive instant confirmation and can manage changes within the website.

See additional information sheet





## Duxton Hotel

2 km from the PCEC

1 St Georges Terrace, Perth

Ph: 1800 681 118

The Duxton Hotel is the perfect accommodation venue for travellers staying in Perth, Australia. Located in the heart of the City, the hotel is only a few minutes' walk away from Perth's major shopping, entertainment and restaurant centres.

Guests can stroll along the Swan River and through tranquil central parklands which are located right on our doorstep. The Hotel also features its own taxi rank so guests can travel to other locations with ease. It is also adjacent to a bus stop which leads to many central Perth attractions free of charge.

Discounted rate of 10% off Best Available. Cancellation policy: 24 hours prior to arrival

Code: BRIDGE0721

Email: [reservations@perth.duxton.com.au](mailto:reservations@perth.duxton.com.au)



## Metro Hotel Perth

10 minutes bus ride from outside the hotel to the PCEC – or a walk along the South Perth foreshore to catch the ferry to Elizabeth Quay

61 Canning Highway, South Perth

Ph: 08 9367 6122

Metro Hotel Perth is giving 15% discount off their Best Available Rate. Also check out any specials they may have. Although it is on the other side of the river to the PCEC, it is easily accessed, has spectacular views of the city and great access to walks along the river and South Perth restaurants.

### Why pick Metro Hotel Perth:

- Great value mid range hotel on the edge of the CBD and close to the airport. Easy access to all arterial roads north and south
- Plentiful free parking
- Public bus from outside the hotel into the PCEC
- A range of room types from Executive Rooms to spacious rooms for families or singles with existing bedding of a king bed and 2 singles or 4 singles
- Incentives such as free transfers or free breakfast for group bookings
- Free unlimited WIFI, 24 hour reception, room service
- Sensational views of the city from most rooms

LINK: <https://metrohotels.com.au/hotels/metro-hotel-perth/>

**CODE:** Enter the Promo Code BRIDGE in the booking panel top of the page. Available until 14 Oct

See information brochure



# citadines

St Georges Terrace  
Perth

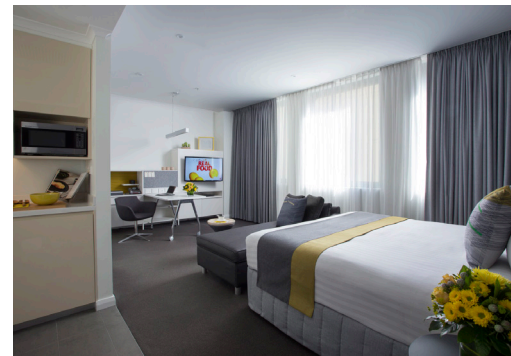
Located in the centre of Perth, vibrant Citadines St Georges Terrace is the perfect home-base from which to experience and explore city living in Australia. Positioned in the heart of Perth's Business District, its prime location is within walking distance to galleries, restaurants, bars, department stores and many quality boutiques at Murray Street and Hay Street Malls.

Citadines offers 85 studio, one-bedroom and two-bedroom apartments designed with both the business and leisure traveller in mind. The properties contemporary features include 24-hour Reception, alfresco restaurant and bar, access to an offsite gym as well as a business corner and complimentary wireless internet.

Citadines is also in a prime location to access the Perth Convention and Exhibition Centre, financial district and is close by to take advantage of the free 'CAT's bus service to get around and see the sites, including the Perth Mint, Swan Bell Tower and the Art Gallery of Western Australia. The central address is also just a street away from Elizabeth Quay which is home to a selection of activities and restaurants along the scenic Swan River.

*All around the world, as The Ascott Limited welcomes you back to its properties, we are committed to providing enhanced hygiene and safety standards for our guests, staff and partners. Citadines St Georges Terrace Perth has been awarded accreditation by Bureau Veritas for our commitment in upholding good sanitation and hygiene practices as outlined by the Ascott Cares programme. For more information please [click here](#).*

Citadines St Georges Terrace Perth  
185 St Georges Terrace  
Perth, Western Australia 6000 Australia  
T: 61 (08) 9226 3355 F: 61 (08) 9226 1055  
E: [citadines.australia@the-ascott.com](mailto:citadines.australia@the-ascott.com)  
GDS chain code: AZ  
For reservations call 1800 766 377 (Local toll-free) or (65) 6272 7272



ASCOTT  
CARES  
Our Commitment to Hygiene and Cleanliness



Vibrancy at its best

# Citadines St Georges Terrace Perth

## ROOM TYPES

	Size (Sqm)	No. of Rooms
Studio Deluxe	30	29
Studio Executive	40	47
Studio Premier	48	7
One-Bedroom Deluxe	56-62	2
Two-Bedroom Executive	70	7

## SERVICES & AMENITIES

### Apartment Features & Amenities

- Wi-Fi internet (complimentary)
- Fully-equipped kitchenette+
  - Cooker hob & hood+
  - Electric kettle
  - Glassware, crockery, cutlery & utensils
  - Refrigerator
  - Toaster
  - Hairdryer
- Home entertainment system with
  - Television/CD/DVD player
- In-room electronic safe
- Steam iron & ironing board
- Washing machine & dryer+

### Business Matters

- Business Centre services\*
- Wi-Fi internet (complimentary)

### Comfort & Convenience

- 24-hour Reception
- 24-hour security & closed-circuit TV surveillance
- Complimentary newspaper at Reception
- Daily housekeeping service (except Sundays & public holidays)
- Electronic key card access
- Fully-equipped gymnasium (off-site)
- Laundry & dry cleaning services\*
- Restaurant & bar\*
- Self-service launderette

### Optional Services\*

- Airport transfer service
- Car park (limited)
- Room service (limited)

\* Charges apply + Selected apartments

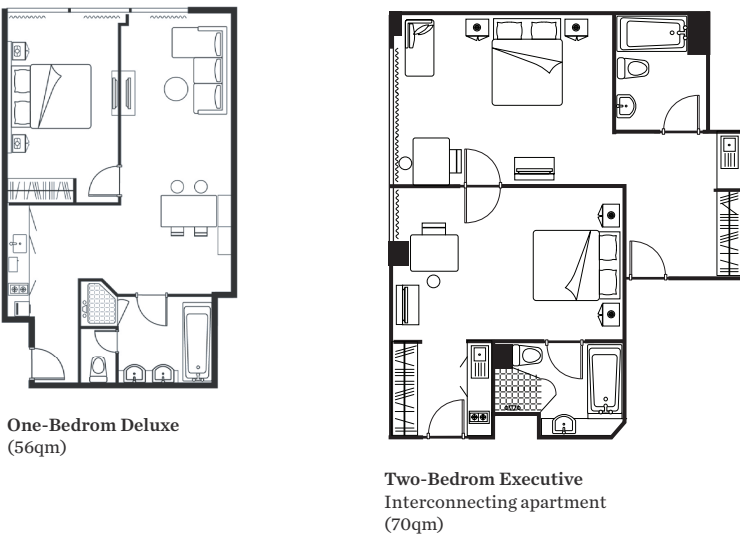
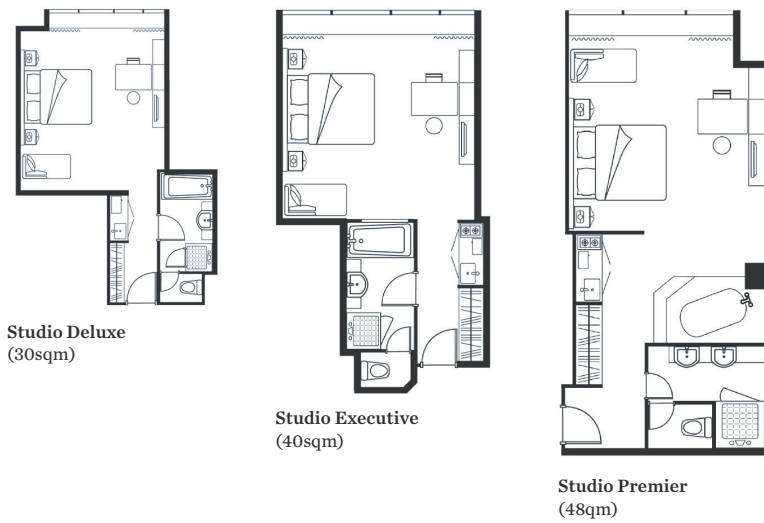
Please note: Not all bathroom layouts are the same. Bathrooms with bathtubs are available upon request.

## HYGIENE & SAFETY

Introducing **Ascott Cares** – our commitment to maintaining high levels of hygiene & cleanliness standards as well as safe distancing to continue providing a safe home for you & a safe working environment for our staff. Ascott has embarked on a holistic programme developed by Bureau Veritas' Health, Safety & Hygiene experts to certify & audit the implementation of Ascott Cares commitments.

Ascott Cares covers nine commitments:

1. Our Staff's Work Environment
2. Guest Safety
3. Physical Distancing
4. Housekeeping
5. Apartments & Rooms
6. Food & Beverage
7. Shared Facilities
8. Contactless & Paperless
9. Our Vendors



# Metro Hotel Perth



## GENERAL INFORMATION

Reception Hours: 24hr

Check In: 2:00PM Check Out: 10:00AM

08 9367 6122

61 Canning Highway

South Perth WA 6151

perth@metrohg.com

Executive Room - Aspire Wing



Superior Riverview Room



## AWARDS AND ACCOLADES



## ROOMS

- **147 guest rooms**
- **Executive Rooms** feature a range of exclusive amenities including coffee pod machines and in-room safe
- **Superior Rooms** feature private balcony and river views, with one king bed and double sofa bed. Suitable for up to 4 guests
- **Standard Rooms** feature private balconies with multiple bedding configurations available. Suitable for up to 4 guests
- **Standard Economy Rooms** offer one queen bed. Suitable for up to 2 guests
- **One Bedroom Apartments** offer a kitchenette, separate bedroom and living area. Suitable for 2 guests

## LOCATION

- 5 minute drive to Perth CBD, Crown Perth, WACA & Perth Zoo
- 10 minutes drive to Perth Stadium
- Public transport available just outside the hotel
- 3 minutes walk to cycle and walking paths along Swan River
- 10 minutes drive or bus ride to Elizabeth Quay and Perth Convention and Exhibition Centre
- 15 minutes drive to Perth Airport Terminals

## PROPERTY FACILITIES

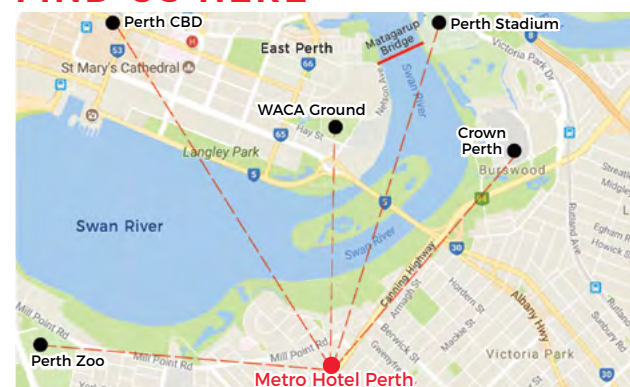


- Red Bill Restaurant and Bar (limited hours)
- Free onsite parking
- Free WiFi
- Function facilities for up to 200 guests
- Room service
- Business Centre
- Guest laundry
- Gym

## ROOM AMENITIES

- Unlimited free WiFi
- Daily room servicing
- Small fridge
- Foxtel (12 channels - Fox Sports, CNN)
- Hairdryers
- Work desk
- Iron and ironing board
- Secure key card entry

## FIND US HERE



100% AUSTRALIAN Owned & Operated



Direct Booking Perks



Confidence & Comfort at Metro Hotels



Best Rate Guarantee

FACT SHEET

# HELLO OLD FRIEND



## DISCREETLY LUXURIOUS

*“Say hello to an old friend with a fresh, new look”*

From the corner of Hay and Milligan Streets in the heart of Perth CBD, The Melbourne Hotel has been a part of the local character and culture since 1897. Our old-world splendour and charm pay tribute to the grand hotels of yesteryear, an era when travel meant something special and guests were welcomed on a more personal level. We’re proud of this heritage, yet keep with the times with a bright contemporary redesign that reflects the dynamic landscape of Perth. Think of us a warm remembrance of the past infused with the energy and excitement of the future.



THE MELBOURNE HOTEL

## FACT SHEET

# A UNIQUE HOTEL EXPERIENCE.

Nod to the past or say hello to the future with our heritage and contemporary guest rooms, designed to provide a warm and comfortable sanctuary from the outside world. Think Sealy Posturepedic beds with premium linens, L'Occitane bath amenities to rejuvenate and revitalise, tech-savvy perks like high-speed Wi-Fi, Bluetooth door entry, TVs with free movies and personal gadget connectivity. We offer simple yet delightful surprises. From the moment you arrive, we go above and beyond the traditional expectations of a hotel and simply give you more. You'll leave feeling refreshed, elated and already looking forward to your next visit.

## OVERVIEW

- Set amongst it all, The Melbourne Hotel is centrally located within the vibrant City of Perth with entertainment, shopping and nightlife on its doorstep
- 73 Heritage and Contemporary guest rooms aesthetically furnished to complement their own individual character
- 5 Eat & Drink experiences
- 24-hour state-of-the-art fitness centre
- 24-hour reception
- 24-hour room service
- Conference facilities for up to 225 guests

## AMENITIES

- Complimentary unlimited Wi-Fi
- Handy Smart Phone
- Bright working desk space
- Sealy Posturepedic bed and luxe linens
- L'occitane amenities
- Flat Screen Smart TV
- Complimentary movies on demand
- In-room safe
- Complimentary local specialty coffee, T2 tea
- Mini fridge
- Luxurious bath robes and slippers
- USB charging ports
- Complimentary national and limited international calls



## FACT SHEET

# FOOD & DRINK

### *Aurora Rooftop Lounge*

Perched on the rooftop of The Melbourne Hotel, the venue transforms from day to night, perfect for meetings, conversations and after work drinks.

#### HOURS

Tue-Wed: 5pm to late

Thu-Sat: 2.30pm to late

### *De Baun & Co*

Paying homage to its heritage and founder John De Baun, the re-envisioned local pub is an ideal venue for after work drinks and watching the big game.

Expect to see your old pub favourites amongst the great food and drinks selection.

#### HOURS

Daily: 11.30am to late

### *Grand Orient*

Housed within the original 1897 building, Grand Orient specialises in authentic Cantonese cuisine. It's the perfect setting for lunch or dinner, taking a private room or simply sipping a cocktail at the Orient Bar.

#### HOURS

Daily: 11.30am to 3pm, 6pm to 10pm

### *Ramen Keisuke Tonkotsu King*

Introducing the first Keisuke in Australia, The Melbourne Hotel is excited to house Japanese born Keisuke Takeda's famous ramen noodle bar. A great choice for the ramen connoisseur.

#### HOURS

Daily: 11.30am to 2.30pm, 5.30pm to 8.30pm

### *Hattendo*

The first in Australia, Hattendo is the Japanese cream bun that begs for another bite. A hybrid of sweet and savoury and handmade to perfection, enjoy the buns in the Conservatory or grab it to go.

#### HOURS

Mon-Fri: 6.30am to 3pm

Sat-Sun: 7.00am to 3pm

### *Conservatory*

The link between old and new, The Melbourne Hotel's glass-roofed Conservatory presents a modern Australian menu and is the perfect place for an a la carte breakfast or small group breakfast meetings.

#### HOURS

Mon-Fri: 6.30am to 3pm

Sat-Sun: 7.00am to 3pm





## FACT SHEET

## MEETINGS & EVENTS

From boardroom to conferences, gala dinners and weddings, our range of spaces can cater for events up to 225 guests. Speak with our team to find out more about our bespoke packages.

## CLOSE BY

- Perth Arena - 350m
- His Majesty's Theatre - 350m
- Kings Park - 1.2km
- Elizabeth Quay - 1.0km
- King Street Precinct - 450m
- Watertown Brand Outlet - 850m
- Free Perth Red CAT Bus Stand - 10m
- Perth Underground Train Station - 550m
- Perth Airport - 19.0km
- Perth Convention & Exhibition Centre - 750m

## LOCATION



## CONTACT

*t.* +61 (8) 9320 3333

*e.* [hello@melbournhotel.com.au](mailto:hello@melbournhotel.com.au)

*a.* 33 Milligan St, Perth,  
Western Australia 6000

[melbournhotel.com.au](http://melbournhotel.com.au)



## GDS CODES

TravelClick Chain Code

Apollo/Galileo

Sabre

Worldspan

Amadeus

ODD

WV

E5339

320431

PER67

PER867

103867