

ACCOMMODATION

Many hotels are offering special rates to ANC 2021 participants. From the *Double Tree by Hilton Perth Waterfront* situated in the heart of Elizabeth Quay, to the historic *Melbourne Hotel* and the *Adina Apartments* close to the Perth Convention and Exhibition Centre (PCEC), there is a range of accommodation types to suit everyone. However, be aware that from time to time these hotels offer special deals, so we suggest you also check these out. Information on participating hotels and the special links or codes for ANC 2021 are provided below. Distances to the PCEC are noted. Please see the Transport section for free and frequent transport to and from the hotels and the PCEC.

The Melbourne Hotel

700m from the PCEC

33 Milligan St, Perth

08 9320 333

From the corner of Hay and Milligan Street in the heart of Perth city, The Melbourne Hotel has been part of the local character and culture since 1897. Fusing old-world elegance with modern, state-of-the-art amenities, a stay at The Melbourne Hotel promises a fascinating glimpse into Perth's dynamic heritage. Opt for the aptly named Heritage Rooms, each a one-of-a-kind space with distinct, original design elements, or experience a contemporary room with sophisticated and modern architecture

Just as every room has a story to tell, so do the five dining offerings. Savour an international array of flavours, from classic Australian favourites to authentic Asian cuisine. Relax in the 'Old Melbourne' pub-styled warmth of De Baun & Co, pick up a decadent Japanese cream bun from Hattendo, sample sophisticated chef-driven Japanese and Cantonese specialities at Keisuke and Grand Orient, or watch the city skyline sparkle to life with a cocktail at Aurora Rooftop Bar. [Link to Fact sheet](#)

<https://reservations.travelclick.com/103867?RatePlanId=5251270>



Rendezvous Perth

600 m from the PCEC

24 Mount St, Perth

Ph: 08 9481 0866

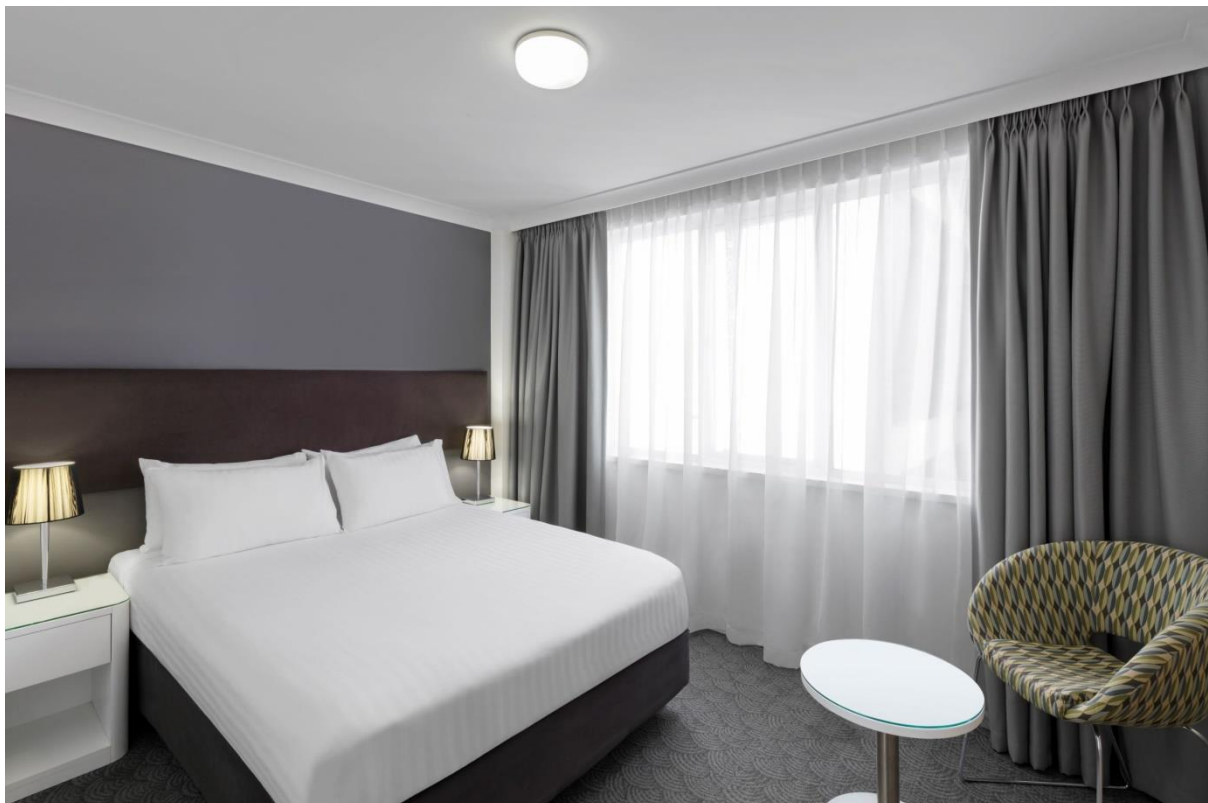
Rendezvous Hotel Perth Central is conveniently located in the heart of Perth's central business district. Within easy walking distance of Perth Convention and Exhibition Centre and just around the corner from St Georges Terrace, and the greenery of Kings Park and Botanic Garden. Whether you are hosting a business conference or intimate private function, make it happen, hassle free at Rendezvous Hotel Perth Central. With 5 spacious rooms catering for boardroom meetings of 5, up to large events of up to 180, let our conference team and purpose built facilities wow your guests. Choose one of our 103 stylish rooms and apartments to enjoy smart accommodation that has been designed with your needs in mind.

Link

https://reservations.tfehotels.com/?adult=2&arrive=2021-07-09&chain=14687&child=0&configcode=SBE¤cy=AUD&depart=2021-07-10&hotel=62271&level=hotel&locale=en-US&promo=ANC21&rooms=1&start=availresults&themecode=TFE_RENSBE

Important information about the online link:

- The discounted rates will apply from the 9th to 23rd July 2021, subject to availability. If we are no longer able to offer the discounted rate, the online link will close
- From time to time specials are run with strict terms and conditions such as fully pre-paid and non-refundable. Those specials have a limited inventory and will be available for delegates to book, if they are happy with those terms and conditions.



Adina Apartment Hotel

100 m from the PCEC

33 Mounts Bay Rd, Perth

Ph: 08 9217 8000

Situated seconds from the Perth Convention and Exhibition Centre, Adina Apartment Hotel Perth is conveniently nestled in the CBD and close to the magnificent Kings Park. The hotel is easily accessible with plenty of parking nearby and within walking distance of the Esplanade Train Station, making it a perfect base for convention delegates. The private, apartment-style accommodation is a home away from home for guests, offering enough room to entertain or simply relax in a spectacular destination.

Link

https://reservations.tfehotels.com/?adult=1&arrive=2021-07-09&chain=14687&child=0&configcode=CORP_SBE¤cy=AUD&depart=2021-07-10&hotel=58462&level=hotel&locale=en-US&promo=ANC21&rooms=1&themecode=TFE_ADISBE

Important information about the online link:

- The discounted rates will apply from the 9th to 23rd July 2021, subject to availability. If we are no longer able to offer the discounted rate, the online link will close
- From time to time specials are run with strict terms and conditions such as fully pre-paid and non-refundable. Those specials have a limited inventory and will be available for delegates to book, if they are happy with those terms and conditions.



Riverview on Mount Street

650 m from PCEC
42 Mount St Perth
Ph: 08 9321 8963

Location is excellent. Close to the CBD and ideal for a wander through Kings Park. Large rooms with kitchenette and balcony.

There is no discount as this is a small and very reasonably priced venue. Please book via the website: <https://riverviewhotel.com.au>



Parmelia Hilton Perth

250m from PCEC

14 Mill St

08 9215 2000

A connected stay in central Perth. We're next door to the Perth Convention and Exhibition Centre, and in walking distance of Brookfield Place and Kings Park and Botanic Garden. Elizabeth Quay on the Swan River, Perth Arena, and His Majesty's Theatre are less than 10 minutes away on foot. Perth Zoo is within five kilometers. Enjoy our outdoor pool and all-day dining at our restaurant.

Link:

<https://nam02.safelinks.protection.outlook.com/?url=http%3A%2F%2Fgroup.hilton.com%2FSGRSA&data=04%7C01%7CLuz.Rizo%40hilton.com%7Cb80a59cb17a6466fade508d8e8acd1d1%7C660292d2cfd54a3db7a7e8f7ee458a0a%7C0%7C0%7C637515176261899874%7CUnknown%7CTWFpbGZsb3d8eyJWlloiMC4wLjAwMDAiLCJQIjoiV2luMzliLCJBTiI6IjEhaWwiLCJXVCi6Mn0%3D%7C1000&sdata=WSp sOcfzzVbgamvBQQLRdauZXovy%2FIi6rytXZKO7C2k%3D&reserved=0>



DoubleTree by Hilton Perth Waterfront

1 km from the PCEC

1 Barrack Square

Ph: 08 6372 1000

Set on the Swan River waterfront, our hotel is next to Elizabeth Quay entertainment and the iconic Bell Tower and short walk to the Perth Convention and Exhibition Centre. Quayside paths are on our doorstep, and we're 10 minutes from downtown Perth and Kings Park and Botanic Garden. Take in views from the rooftop pool and bar, and enjoy our 24-hour fitness centre and a warm DoubleTree cookie on arrival.

Link:

<https://nam02.safelinks.protection.outlook.com/?url=https%3A%2F%2Fwww.hilton.com%2Fen%2Fbook%2Freservation%2Fdeeplink%2F%3F%26ctyhocn%3DPERBSDI%26groupId%3DGBAWA%26arrival%3D20210710%26departure%3D20210720%26flexibleDates%3Dtrue%26cid%3DOM%2CWW%2CHILTONLINK%2Cen%2CDirectLink%26fromId%3DHILTONLINKDIRECT&data=04%7C01%7CKate.Murray%40hilton.com%7C3524b1e656264d28516c08d8ed0a2422%7C660292d2cfd54a3db7a7e8f7ee458a0a%7C0%7C0%7C637519975110633767%7CUnknown%7CTWFpbGZsb3d8eyJWljiMC4wLjAwMDAiLCJQIjoiV2luMzliLCJBTiI6IjEhaWwiLCJXVCI6Mn0%3D%7C1000&sdata=SzKcHZvvCNSFofNus6iXO1tYD6JzYoRZ4C5fd6%2BIT3A%3D&reserved=0>



Nesuto Mounts Bay

0.5 km from the PCEC
112 Mounts Bay Rd
Ph: 08 9213 5333

A stay at Nesuto Mounts Bay places you in the heart of Perth, within a 5-minute walk of Jacobs Ladder and Perth Convention and Exhibition Centre (PCEC). This 4-star aparthotel is 0.5 mi (0.8 km) from Central Park Tower and 0.5 mi (0.9 km) from His Majesty's Theatre.

Make yourself at home in one of the 139 air-conditioned rooms featuring kitchens with refrigerators and stovetops. Rooms have private balconies. Cable programming and DVD players are provided for your entertainment, while complimentary wireless Internet access keeps you connected. Conveniences include phones, as well as safes and desks. Be sure to enjoy recreational amenities, including an outdoor pool, an outdoor tennis court, and a fitness center. Additional amenities at this aparthotel include complimentary wireless Internet access, tour/ticket assistance, and a vending machine.

Enjoy a satisfying meal at Courtside Restaurant serving guests of Nesuto Mounts Bay . Buffet breakfasts are available daily from 6:30 AM to 10:00 AM for a fee.

<https://reservations.travelclick.com/10787?groupID=3201591>



Crowne Plaza

2.2 km from PCEC

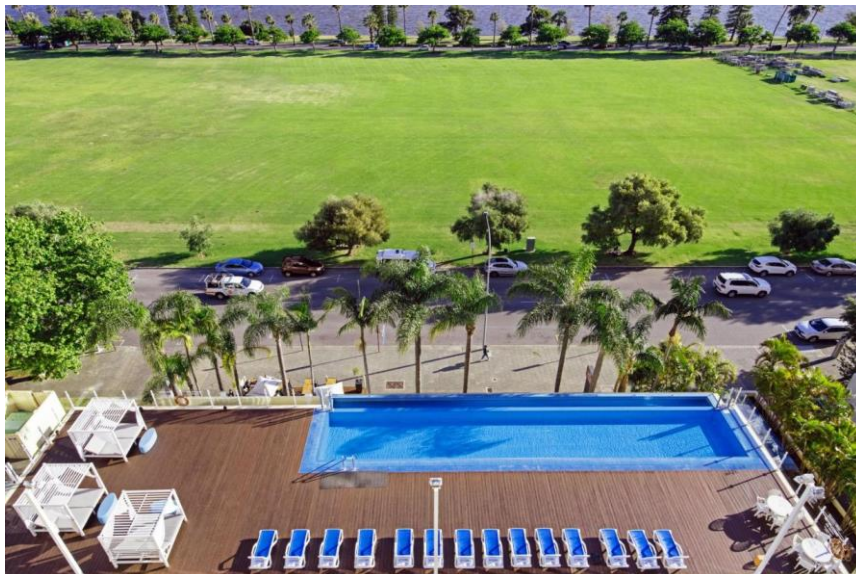
54 Terrace Rd, East Perth

Ph: 08 9270 4200

Crowne Plaza Perth is a refreshingly personal hotel conveniently located to everything Perth has to offer both business and leisure guests. Many of the spacious guestrooms offer impressive views of picturesque Langley Park and the Swan River. Easy reach of the city and its many attractions make this Perth hotel the ideal place to stay for leisure and business travel. The natural surrounds are ideal for relaxing and recreation, while onsite parking and free public transport make it simple and convenient to get around town.

Guests at Crowne Plaza Perth enjoy all the facilities and service you would expect from a premium city hotel plus more. The hotel's gym, pool, recreation facilities, 24hr business centre and professional team ensure guests remain relaxed, productive and energised throughout their stay. Enjoy a healthy meal from in-room dining menu, relax at the hotel's lobby bar or dine alfresco under the palms at Gusti Restaurant. Sample some of Western Australia's best local produce and distinctive Margaret River wine.

<https://www.crowneplaza.com/redirect?path=hd&brandCode=CP&localeCode=en®ionCode=925&hotelCode=PURTR&PMID=99801505&GPC=BA1&cn=no&viewfullsite=true>



Citadines St Georges Tce

450 m from the PCEC
185 St Georges Terrace, Perth
08 9226 3355

Positioned in the heart of Perth's CBD, Citadines St Georges Terrace is perfectly located for delegates attending the Australian National Championships at the Perth Convention and Exhibition Centre, as the centre is only a short 5-minute (450 metre) walk away. Citadines offers a selection of spacious studio apartments with fully-equipped kitchenettes, large working desk and modern amenities. The properties contemporary features include a 24-hour reception, alfresco restaurant and bar, access to an offsite gym, business corner and complimentary Wi-Fi. Guests will also enjoy being a stone's throw from the cities' best restaurants, bars & nightlife, scenic Swan River and Elizabeth Quay.

Making a booking is simple!

1. Visit CITADINES.com
2. Select 'Citadines St Georges Terrace Perth' from the Destination List
3. Enter your reservation details, Click on Do you have a code? Select Corporate and enter your code: **P5PCE804** to receive a 15% discount off our Best Flexible rates with very flexible 24-hour cancellation policy!
4. You will receive instant confirmation and can manage changes within the website.

[Link to Fact Sheet](#)



Duxton Hotel

2 km from the PCEC

1 St Georges Terrace, Perth

Ph: 1800 681 118

The Duxton Hotel is the perfect accommodation venue for travellers staying in Perth, Australia. Located in the heart of the City, the hotel is only a few minutes' walk away from Perth's major shopping, entertainment and restaurant centres.

Guests can stroll along the Swan River and through tranquil central parklands which are located right on our doorstep. The Hotel also features its own taxi rank so guests can travel to other locations with ease. It is also adjacent to a bus stop which leads to many central Perth attractions free of charge.

Discounted rate of 10% off Best Available Rates. Cancellation policy: 24 hours prior to arrival

Code: BRIDGE0721

Email: reservations@perth.duxton.com.au



Metro Hotel Perth

10 minutes bus ride from outside the hotel to the PCEC – or a walk along the South Perth foreshore to catch the ferry to Elizabeth Quay

61 Canning Highway, South Perth

Ph: 08 9367 6122

Metro Hotel Perth is giving 15% discount off their Best Available Rate. Also check out any specials they may have. Although it is on the other side of the river to the PCEC, it is easily accessed, has spectacular views of the city and great access to walks along the river and South Perth restaurants.

Why pick Metro Hotel Perth:

- Great value mid range hotel on the edge of the CBD and close to the airport. Easy access to all arterial roads north and south
- Plentiful free parking
- Public bus from outside the hotel into the PCEC
- A range of room types from Executive Rooms to spacious rooms for families or singles with existing bedding of a king bed and 2 singles or 4 singles
- Incentives such as free transfers or free breakfast for group bookings
- Free unlimited WIFI, 24 hour reception, room service
- Sensational views of the city from most rooms

LINK: <https://metrohotels.com.au/hotels/metro-hotel-perth/>

CODE: Enter the Promo Code BRIDGE in the booking panel at the top of the page.

Link to information brochure

